



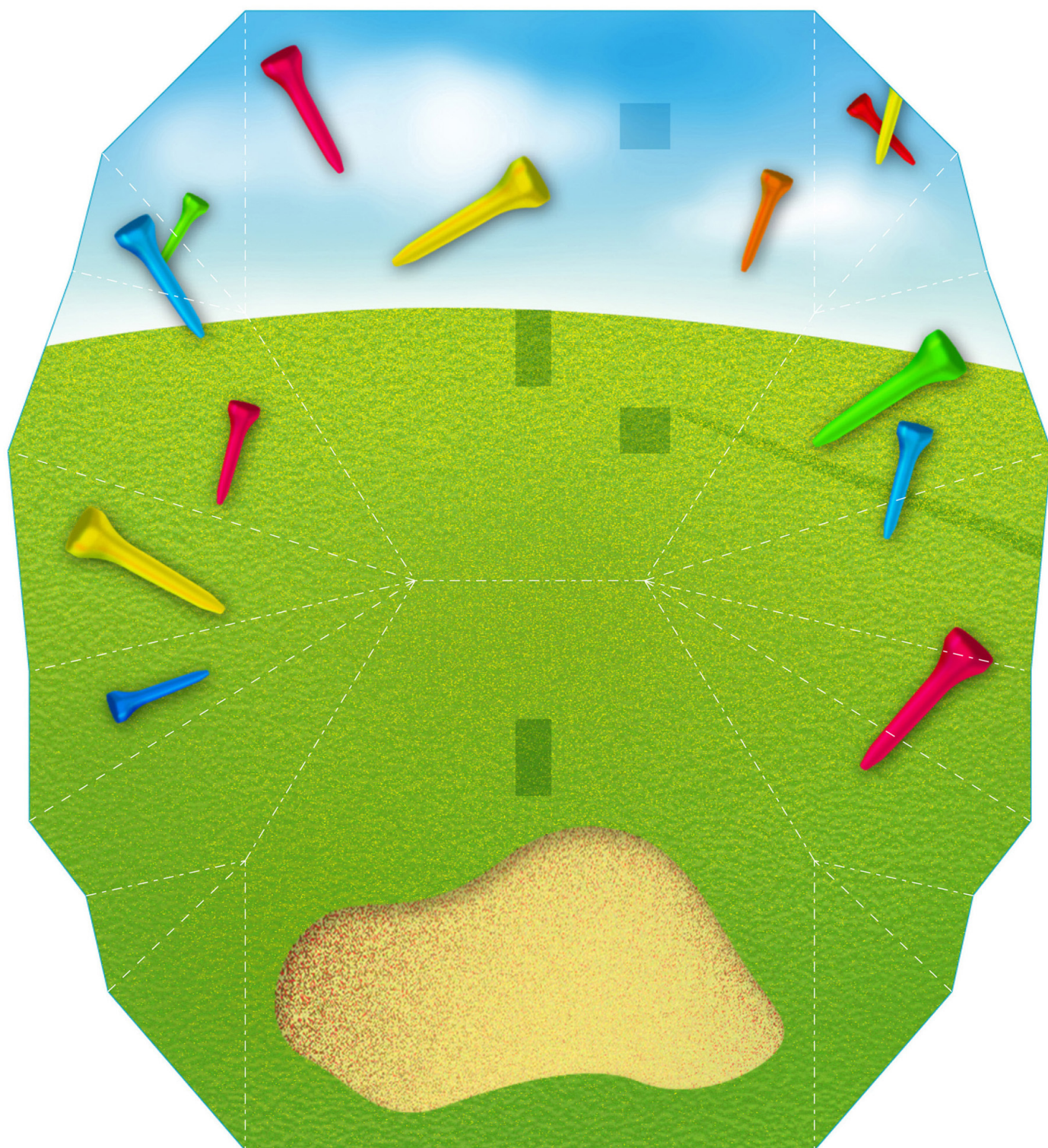
C01

C02



C03

C04

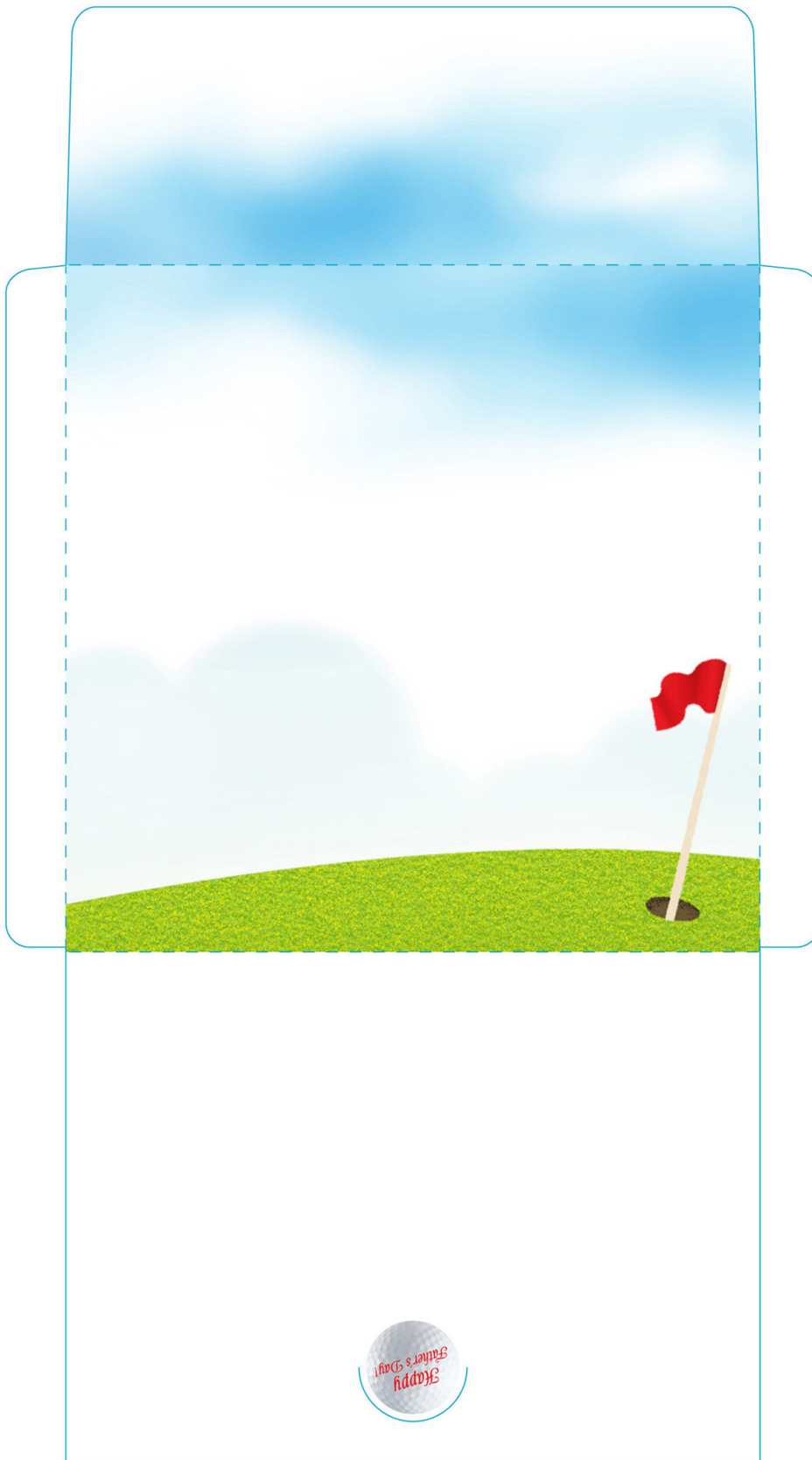


C05

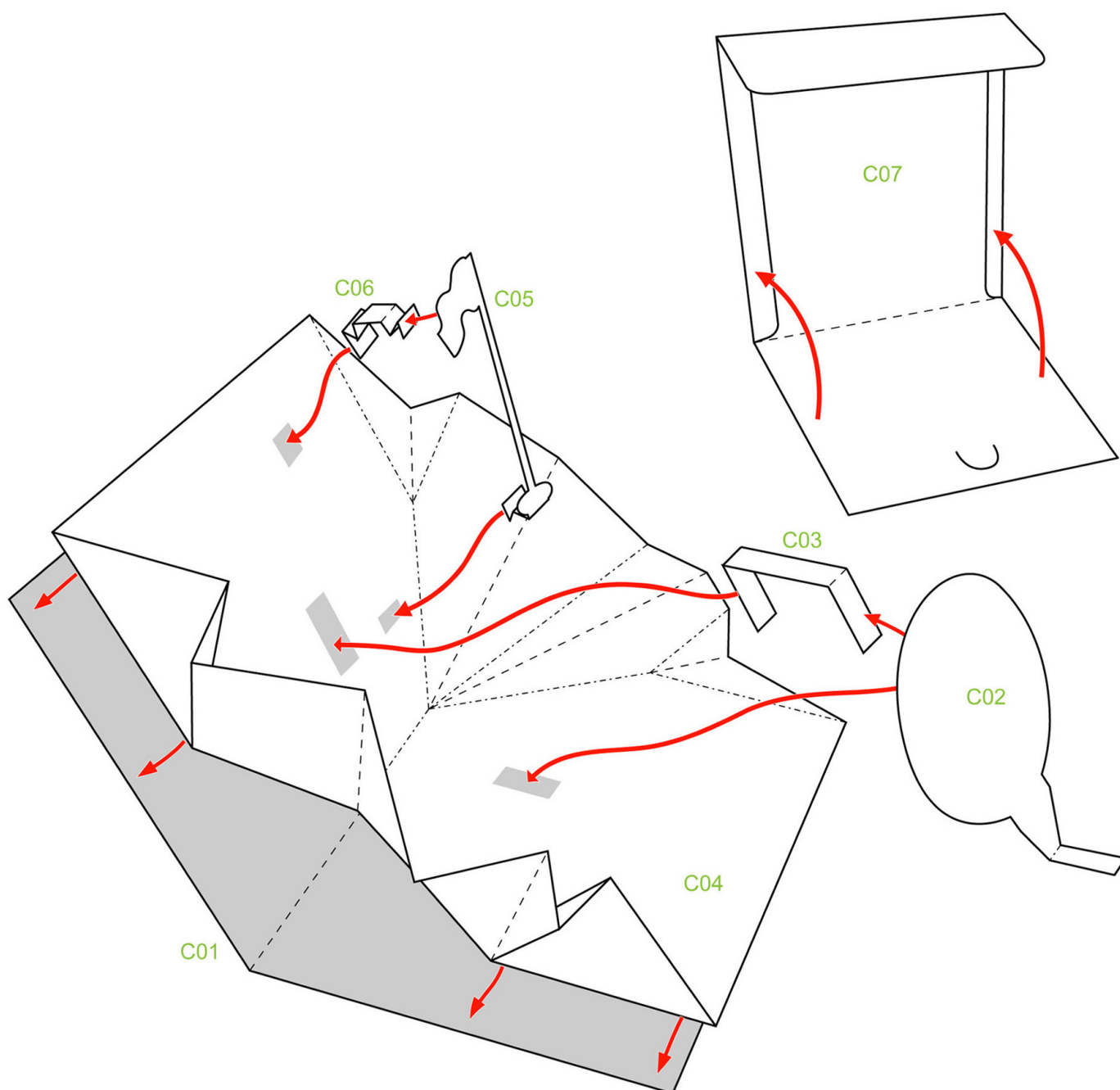
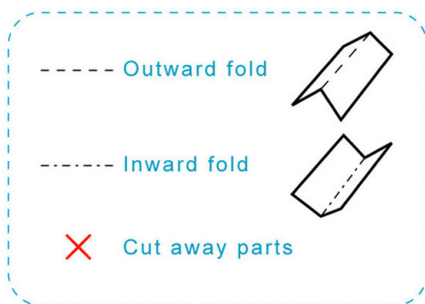


C06

C07



Assembly Instructions



Instructions

1



Use a pen whose ink has dried out, or a tracer, to trace lines first.

2



Separate all parts along the lines. Mark their identity on the back to avoid confusion.

3



Fold and glue C01 & C04 to form a card.

4



Make cuts along the blue line on C07, then fold and glue to form an envelope.

5



Glue C02, C03, C05 and C06 according to the assembly instruction and now you have this beautiful Father's Day Card!