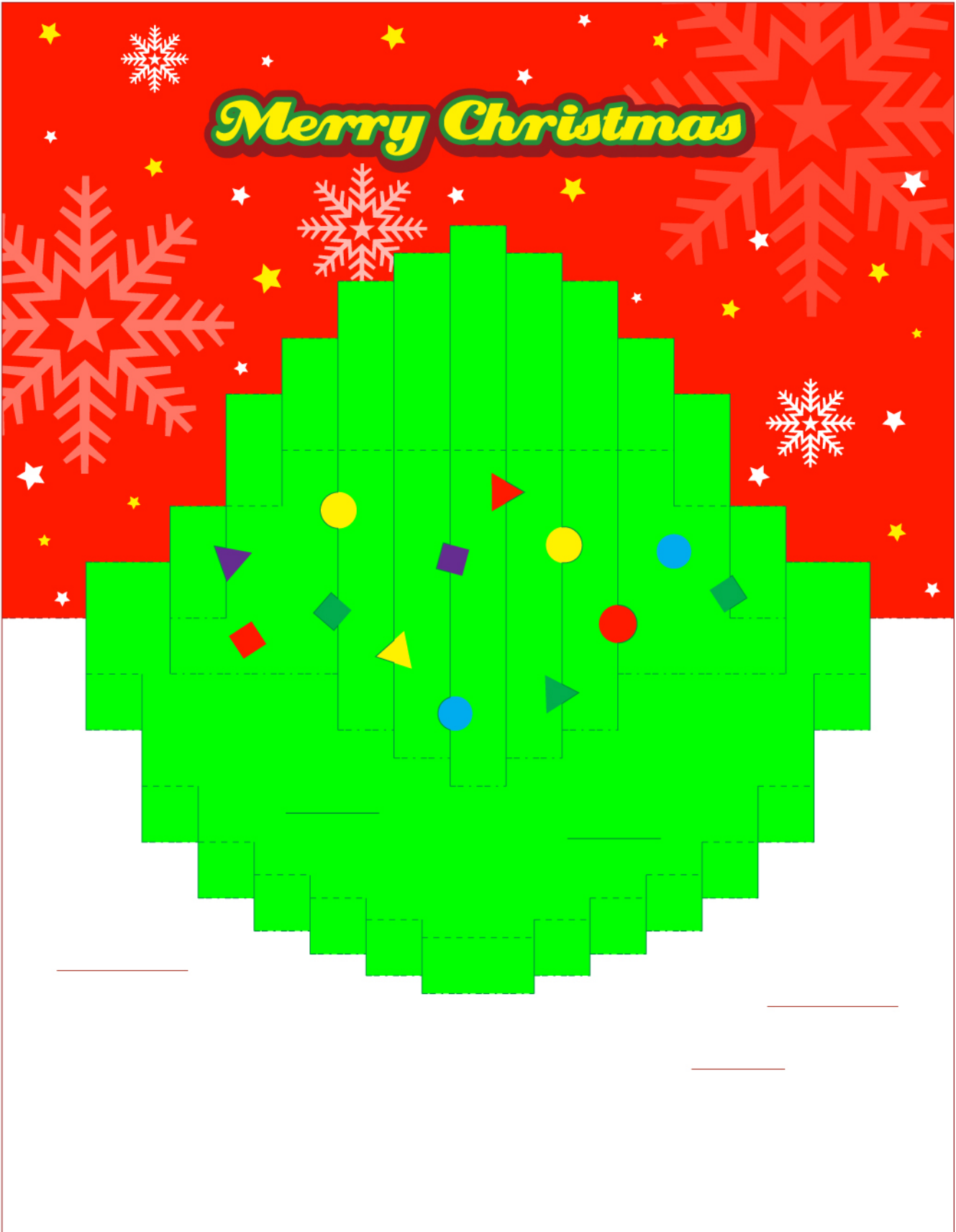


**Merry Christmas
&
Happy New Year**

C01



C02



C03



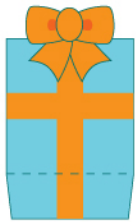
C04



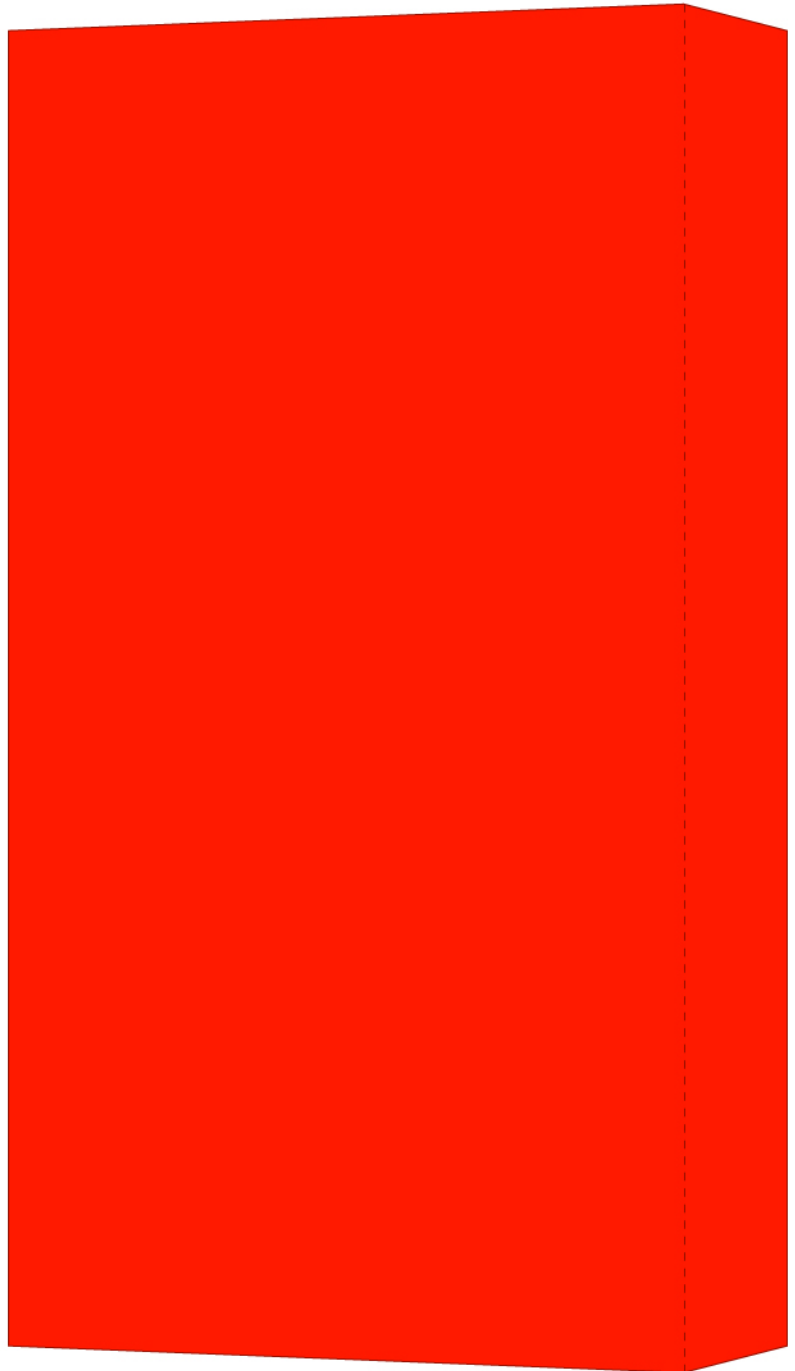
C05



C06



C07



C08



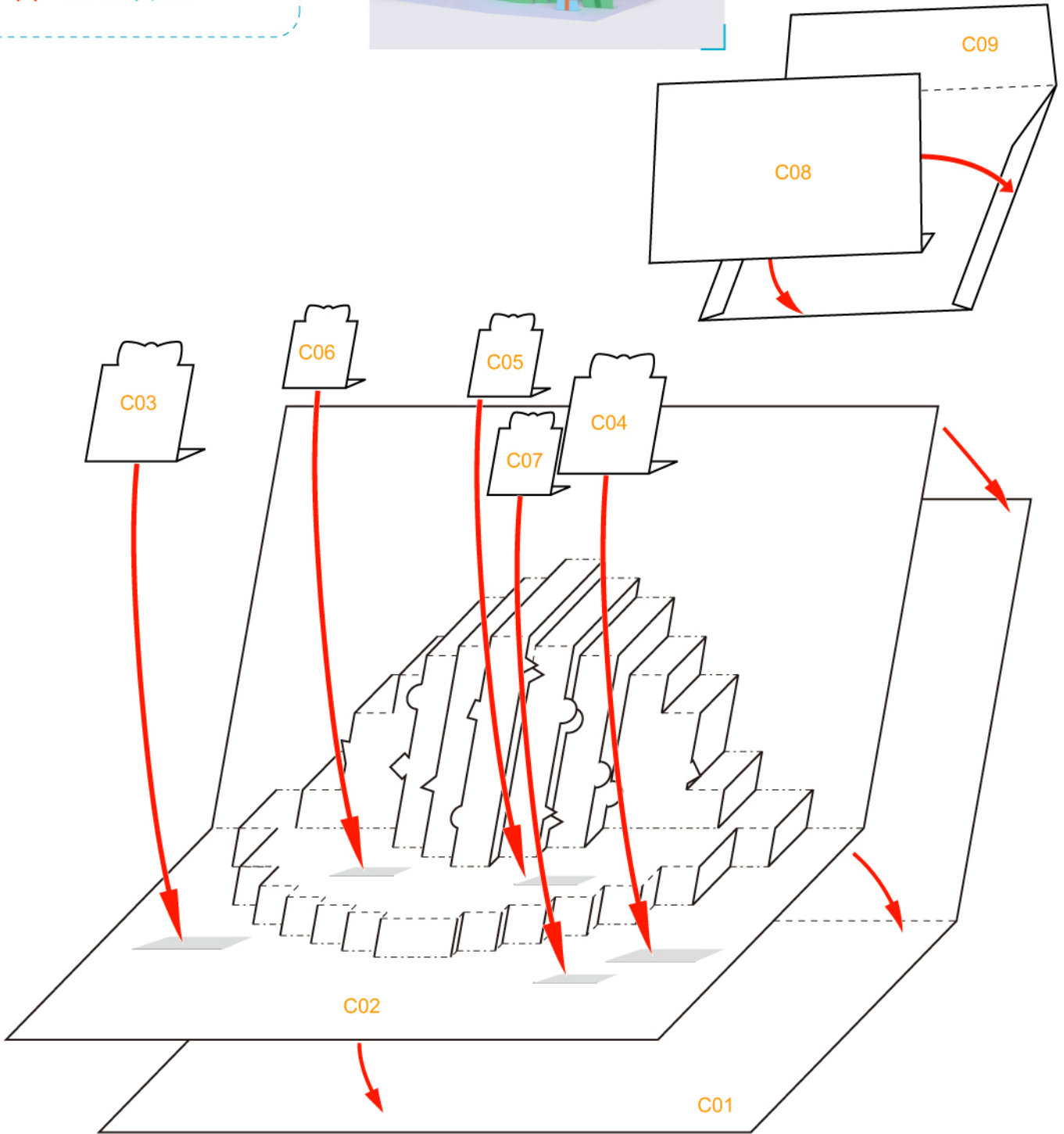

C09

Assembly Instructions

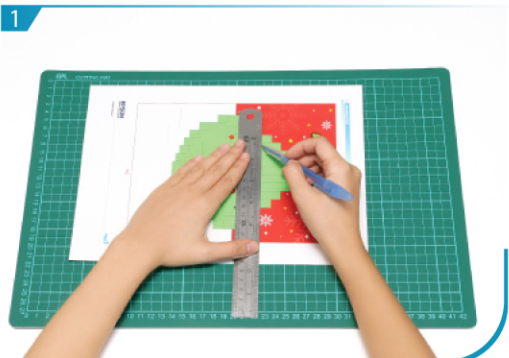
--- Outward fold

--- Inward fold

✗ Cut away parts



Instructions



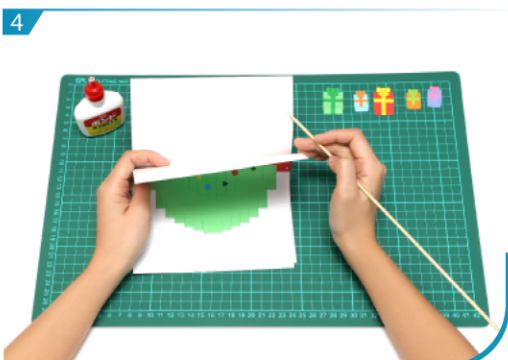
Use a pen whose ink has dried out, or a tracer, to trace lines first.



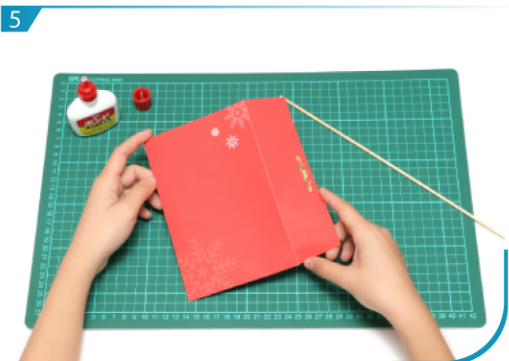
Cut along the cutting lines on C02.



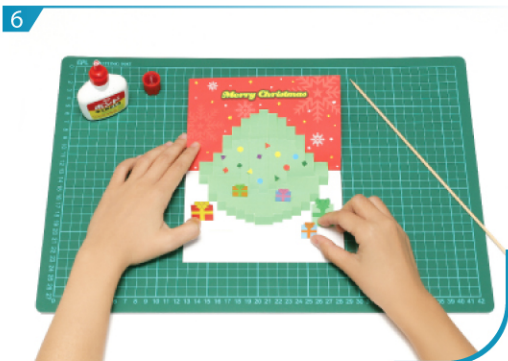
Separate all parts along the lines. Mark their identity on the back to avoid confusion.



Fold and glue C01 and C02.



Fold and glue C08 and C09 to form an envelope.



Glue C03 - C07 according to the assembly instruction and the beautiful Christmas Card is now done!